

IMT Cabin Series





Cabin can be your oasis in the office - a place to reflect, respond and reconnect.

The Cabin Series from IMT provides you with a quiet calm place for private meetings or personal calls. They can even be an office or larger meeting room. Our Cabins are unitized meaning you can start with a double unit today and add as many units together as you need - WHEN you need them. Its the ultimate in flexibility and customization with 3 - 4 week deliveries.



 Cabin



 Cabin Duo Office



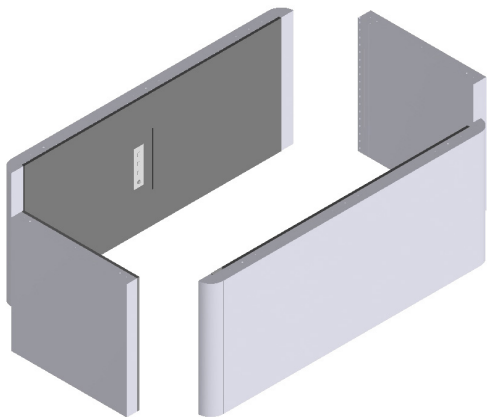
 Cabin Duo Meeting



 Cabin Quad

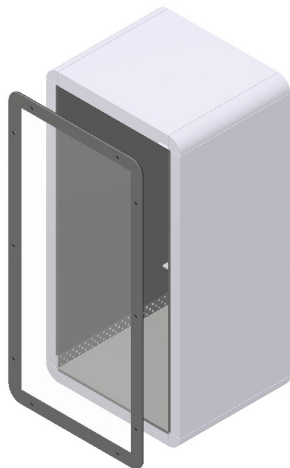
The Cabin Series has a slim modern look with rounded corners and clean lines. Front and back vision panels are our standard 10mm tempered glass. Doors close cleanly with our magnetic locks on double acoustically sealed doors. You have a choice of multiple exterior finishes with optional seismic bracing (if required) with no modification to the overall look or function.

Cabin Assembly Instruction



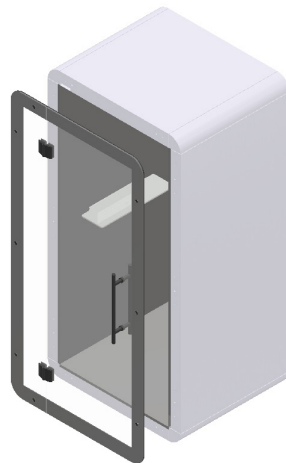
1.

Set all the components on the floor and join together.



2.

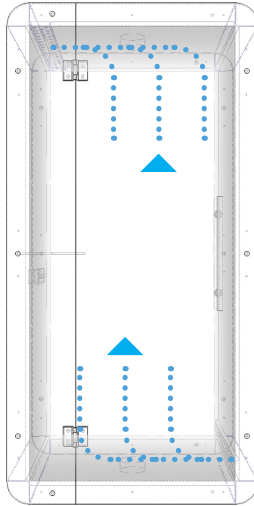
Attach the glass back panel.



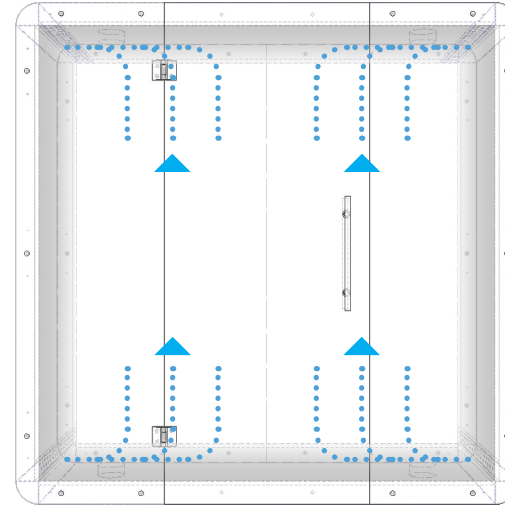
3.

Attach the front door panel and ENJOY!

The frames are delivered to the site as a pre-manufactured structure ready for assembly and can be easily assembled with just a few flush mounted screws. Hidden lockable casters in the floor structure means that if you assemble it in one place today, you can easily move it to a new location in minutes without specialized tools or hardware. Even the pre-drilled sprinkler knockout can be removed with a simple hit of a hammer.



Single Cabin Ventilation



Double Cabin Ventilation

Air is exchanged in each unit from vent openings hidden in the floor and side wall panels. An air circulation system in the ceiling will draw the air through the unit up and out the ceiling panels. The number of vents and fan units increase proportionally as the unit sizes increase and exceeds ANSI/BIFMA standards.

Cabin Finishes



Interior Finishes



Light Grey

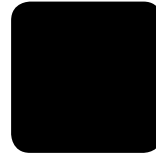


Dark Grey

Standard Exterior Finishes



Soft White



Soft Black

Premium Exterior Finishes



Vision Mink



Relax Green



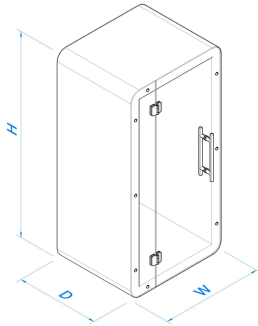
Ocean Blue



Argile Clay

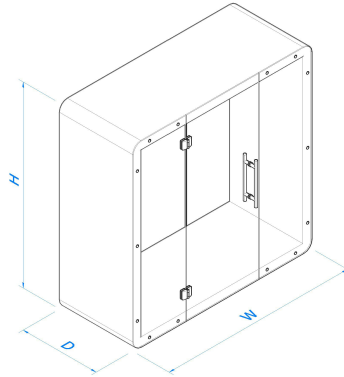
IMT's Cabin Series will suit any environment. Door hardware is available in your choice of Black or Clear Anodized while the ceramic printed edges will always be Black (as shown in the images throughout). In addition to the finishes shown, all IMT standard laminate options are available. Fire Rated exterior finishes are also available if needed.

Cabin



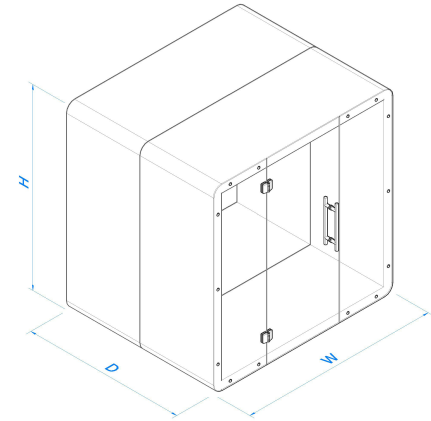
dimensions	overall	inside
height	88"	80"
depth	37"	36"
width	44"	36"

Cabin Duo



dimensions	overall	inside
height	88"	80"
depth	37"	36"
width	88"	80"

Cabin Quad



dimensions	overall	inside
height	88"	80"
depth	73"	72"
width	88"	80"

IMT's Cabin Series can be "added on to" as your needs change from the Cabin Duo Series and upwards. The only limit to how deep you want to make the units is the floor space available.



IMT Modular Partitions Ltd. 40 Penn Dr Toronto, ON M9L 2A9 Canada
www.i-m-t.com info@i-m-t.com T 1-416-743-4513 F 1-416-743-0132